



THE BLUE RIDGE

SQUARE FOOTAGE 2,037

3 Bedrooms 2.5 Bathrooms



ELEVATION A

Shown with Optional Exterior Features

These are artist renditions for sales purposes only. Refer to working drawings for actual dimensions.

© 2020 Nationwide Homes, Inc. All Rights Reserved.





THE BLUE RIDGE

Total Potential Area:
2,037 Sq. Ft.

1,189 Sq. Ft. Finished
848 Sq. Ft. Unfinished

Dimensions:

44'0"W x 27'8"D

3 Bedrooms
2.5 Bathrooms

Cape-Cod Style

Foyer Cubby & Bench

Over-sized Kitchen Island

Rectangular Lavatory Sinks

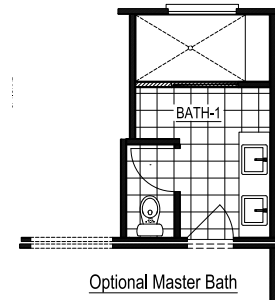
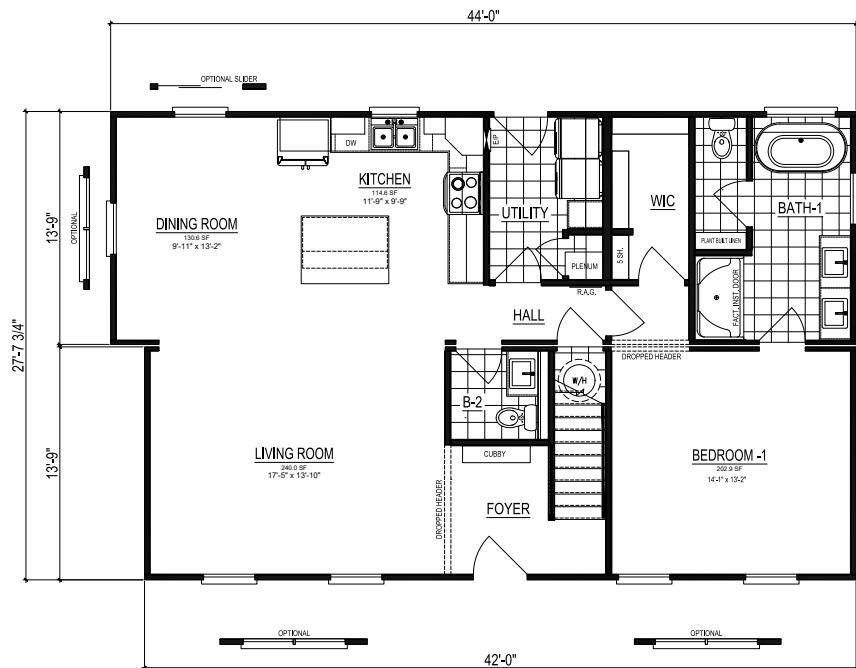
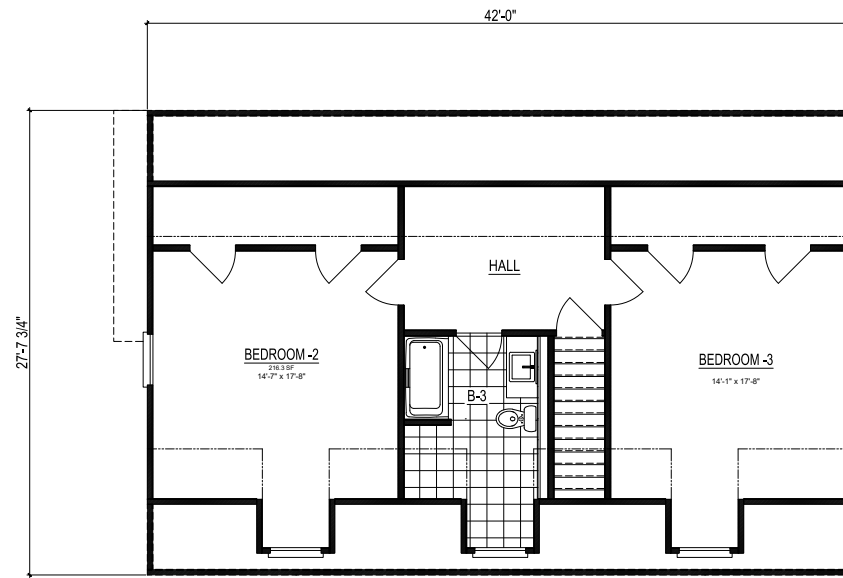
Walk-in Closet



nationwide-homes.com

facebook.com/nationwidehome

instagram.com/nationwidehomes



Optional Master Bath



Shown with Optional Interior and Exterior Features

These are artist renditions for sales purposes only.

Refer to working drawings for actual dimensions.

© 2020 Nationwide Homes (Summer 2020)

